

Connecticut Conservation and Development Policies Plan 2025-2030 Preliminary Draft

November 29, 2023

Today's Meeting

- Provide an overview of preliminary draft C&D Plan
- Per CT General Statutes Sect. 16a-28(b), the Office of Policy and Management shall work on revising the draft C&D Plan after December 1st to publish and disseminate for public comment by March 1st of 2024
- Receive Continuing Committee feedback on possible revisions
- Next steps

C&D Plan Introduction

- Establishes priorities affecting natural, built and social environments to guide state agency actions
- Responds to Commission on CT's Development and Future (CCDF) recommendations through new priorities, more transparent and inclusive planning process and potential new implementation mechanisms
- Transitional plan – focuses initially on state agency actions to better position the next Plan to address enhanced integration with regional and local planning
- Focuses on greater interagency collaboration and highlights the intersection of state priorities with federal and state planning and operation requirements

Planning Process

- Guided by Commission on CT's Development and Future recommendations from September 2023
- Reviewed agency plans and programs and discussed priorities and interagency collaboration with agencies
- Sought Continuing Committee guidance on principles and priorities
- Conducted four virtual public engagement sessions and launched C&D Plan website
- To be continued...

Guiding Principles of the Plan



SUSTAINABLE

We will balance the ecological, social, and economic dimensions of conservation and development to meet current needs without compromising the future.



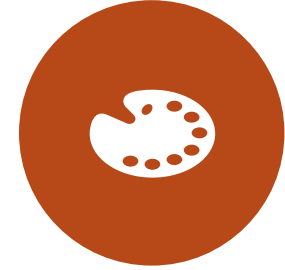
RESILIENT

We will develop and maintain the capacity to prepare for, recover from, adapt to, and thrive in changing and disruptive conditions.



EQUITABLE

We will ensure a high quality of life and opportunity for people of any income, race, ethnicity, gender, ability, or age.



VIBRANT

We will create and maintain diverse communities and an innovative, thriving economy, while also preserving unique historic, natural, and cultural features.

Vision for Connecticut's Future

- **A Thriving Economy** – CT will have a flourishing and diverse economy that leverages our strategic location, existing infrastructure, and natural and cultural assets
- **Healthy People and Places** – CT will offer healthy communities that enable the health and well-being for residents of all incomes, races, genders, ethnicities, abilities and ages
- **Housing for Current and Future Residents** – CT will have a diversity of housing types across the state that are able to meet residents' needs at all income levels and all stages of life
- **Stewarded Resources** - Connecticut's natural, cultural, social, historical, and economic resources will be well-stewarded to bolster their ability to withstand disruptions and ensure long-term health and viability
- **Connected and Inclusive Communities** - Connecticut will host unique, diverse and inclusive communities that are well connected with each other and the larger northeast region

Policies

Six broad policies directed at agency operations and activities to encourage comprehensive planning.

1. Seek multiple benefits and create efficiencies across agencies to optimize the use of state resources in conservation and development initiatives.
2. Leverage federal and private resources to support programs and projects that balance priorities.
3. Support planning among partners in conservation and development to advance high quality projects for potential state investment.
4. Develop greater capacity to leverage and use existing data.
5. Promote regional solutions to conservation and development and in the efficient use of limited resources.
6. Clearly communicate priorities horizontally and vertically within and across agencies.

Implementation Measures

- Implementation measures will determine the consistency of certain agency actions with the Plan
- The implementation measures are to be reviewed collectively, not individually, to help identify:
 - How an action can be designed to support multiple objectives
 - Steps that can be taken to mitigate any impacts that would be inconsistent with these objectives
 - Opportunities to collaborate with other agencies, programs, initiatives

Implementation Measures

- Increase and diversify CT's housing supply to include rental and ownership, affordable and market-rate, small and family-sized units in a variety of medium- and high-density development types appropriate to the neighborhood context through new construction, rehabilitation of existing units and adaptive reuse of existing buildings.
- Reduce the number of low- and moderate-income households that are cost-burdened by housing, transportation and energy costs.
- Promote universal design in new construction or substantial renovation projects.
- Maximize use of existing public sewer, water and transportation infrastructure.
- Promote infill, redevelopment and revitalization of neighborhoods that have suffered from prolonged disinvestment.
- Preserve historically, culturally, and architecturally significant sites, structures, landscapes, buildings, and objects.
- Avoid developing prime farmland soils, wetlands, habitat areas, and core forest.
- Avoid new development activities in areas prone to flooding and inundation from sea-level rise or storms.

Implementation Measures

- Incorporate low-impact development techniques, energy efficiency and resilience, and climate resilience technologies and techniques in development projects.
- Encourage development project design to consider the applicability of future technologies such as smart city technologies, autonomous vehicles, 5G service, new energy systems, etc.
- Foster bike, pedestrian and micro-mobility connections between dense residential, commercial and mixed-use development and existing or planned transit.
- Support robust community, private partner, advocate and other stakeholder engagement in planning for and improving quality of life at a neighborhood scale.
- Support arts, culture, and entertainment activities in higher density areas with transit access.
- Enhance urban tree canopies and green spaces.
- Improve the climate resilience of existing public infrastructure, and avoid siting new infrastructure in areas prone to flooding and inundation from sea level rise and/or storms.
- Incorporate low-impact development techniques, energy efficiency and resilience, climate resilience technologies and techniques and equity measures in the maintenance and management of state-owned facilities.

Implementation Measures

- Develop coordinated capacity and infrastructure for solid waste management that provides efficient, equitable and sustainable systems.
- Locate public-facing government facilities on sites served by transit.
- Increase the diversity of CT businesses by size and type, focusing on entrepreneurs who are women, minority and/or immigrants, and support business growth and evolution to maintain businesses within the state.
- Increase proximity between childcare, medical, transit, workforce development and employment opportunities to foster more affordable living.
- Support innovation, sustainability and economic health in CT's agricultural and aquacultural sectors.
- Maximize protection, restoration and/or enhancement of biodiversity, ecosystem health and functioning, and the ability of the natural environment to adapt to climate change.
- Provide equitable access to natural resources and recreation opportunities.
- Invest in strategic open space conservation and management that meaningfully contributes to the state's open space goals, ecosystem health and/or climate change adaptation.

Proposed Plan Implementation

- Amend CGS 16a-31 increase from \$200,00 to \$1,000,000 the value of agency actions affecting property that need to be consistent with the C&D Plan and require that agencies document and transmit to OPM their determination of consistency with the Plan's implementation measures, in a manner to be developed by OPM
- Repeal CGS Chapter 297a, "Priority Funding Areas"
- Establish an ad hoc C&D Plan Advisory Committee of state agency staff to:
 - Continue interagency engagement
 - Provide a forum for developing approaches to balance conflicting conservation and development priorities
 - Evaluate opportunities for interagency efforts and integration of resources
 - Consult with OPM on the development of a Plan consistency reporting mechanism
- Regular engagement with Continuing Committee during implementation – suggest annual meeting

First Draft

Preliminary draft, as of November 2023, of the
2025-2030 State C&D Plan



Website

- <https://storymaps.arcgis.com/collections/7ce949e7bdd341c689f2cee82d34f3f8>

Next Steps

Dec-Jan

Consider agency and Continuing Committee feedback and revise draft

Jan mtg

Review revised draft with Continuing Committee

Feb

Make further revisions and publish draft for public comment by March 1, 2024

Spring

Seek public comment through written feedback and hearings coordinated with the Councils of Governments

Summer

Make further revisions in consultation with state agencies

Fall

Review draft with Continuing Committee and prepare final recommended draft by Dec. 1, 2024